

FENG SHUI

with Grandmaster Datuk Dr Yap Cheng Hai and son, Boh Chu



Mirror, mirror ON THE WALL...

CURRENTLY, my house has a wall feature with a big mirror facing the main door. I understand this will affect the flow of wealth out of the house rapidly. Since I cannot remove the mirror as it is glued to the wall, is there anything I can do or hang to rectify the situation? The wall is in between the north and south direction and faces south.

You are correct, the mirror facing the front door is not good. I do not understand why you say the mirror cannot be removed as it is only glued to the wall. At worst, sacrifice the mirror. If you do not wish to do that, then I suggest you cover the mirror with a curtain, feature screen and so on.

I was born on Feb 1, 1968 at 1755 hours. Someone told me that my gua number is "1", while another said it is "9". Which gua number is correct?

Your gua number is nine, which is calculated based on 1967. This is because your birthday is before the Li Chun date and the time of Feb 5, 1968 at 0208 hours. Anyone born before Li Chun of that year is considered born in the preceding year for the purpose of calculating the Life Gua.

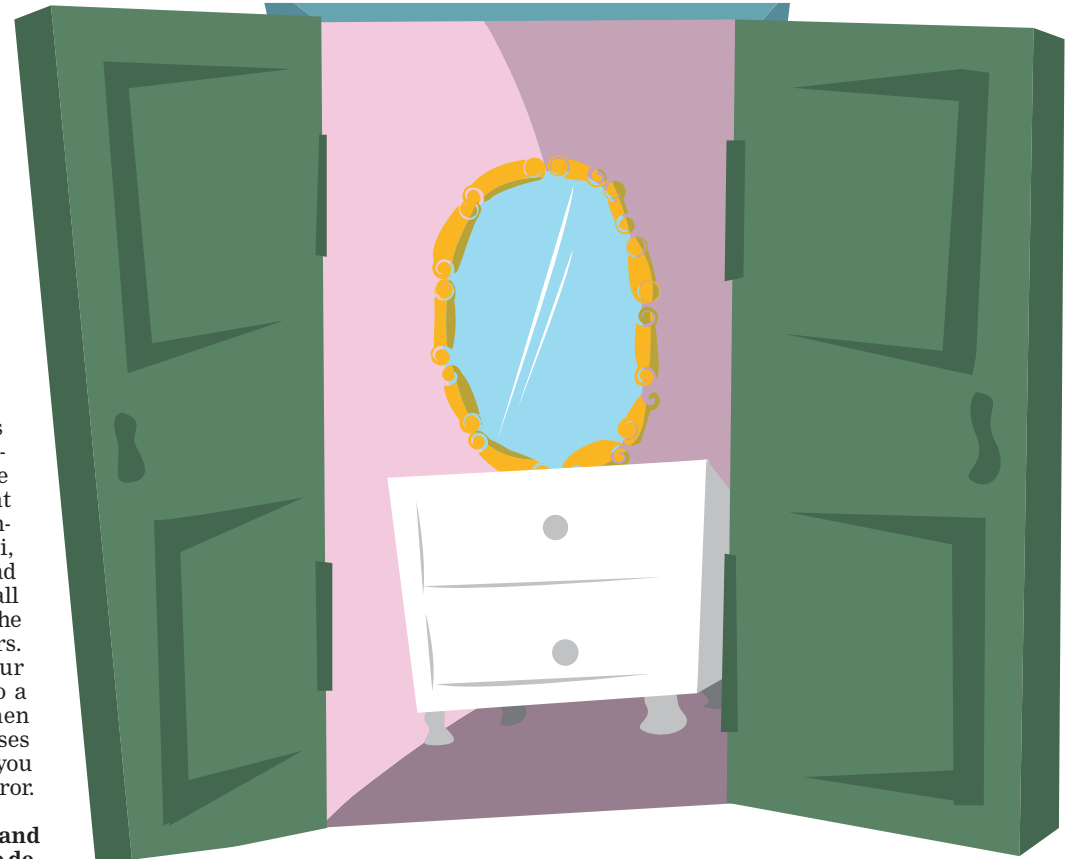
My neighbour recently hung a Ba Gua in front of his house right opposite my main door. Will this reflect any bad qi on my house? Should I hang a Ba Gua to deflect it?

Whether the Ba Gua mirror reflects the bad qi into your house would depend on a couple of things. For instance, is there any bad qi to reflect, such as pointed roofs, sharp detailing

from your house or any such thing that may give rise to poison arrows? If so, then the next question is 'What type of Ba Gua mirror is your opposite neighbour using?' There are essentially three types of Ba Gua mirrors: straight (normal mirror), concave and convex. They all have slightly different functions. The straight mirror will reflect back to you. The concave mirror would absorb. If it is bad qi, then your neighbour has absorbed the bad qi! Finally, the convex mirror disperses all the bad qi. My personal preference is for the convex mirror as it does no harm to others. You may discuss with your neighbour to see if he can change his Ba Gua to a convex mirror. That way, you will then not have to worry about it. If he refuses to change it, then I would suggest that you do hang up a Ba Gua with a convex mirror.

In Loh Shu, determining the sitting and facing star is important. How does one determine the polarity when flying a sitting or facing star? Thereafter, what is the proper direction to fly the star? I understand that each direction and period star carries a different polarity. How do we know when is yang and yin while flying these stars? When determining the facing position of an apartment, is the entrance of an apartment or the main building entrance considered a facing position? Sometimes the entrance of a parcel is at the reversed direction of the main building entrance. I look forward to your advice.

ILLUSTRATION BY LEE WAN YEE



Do avoid placing a mirror facing the front door

The questions you pose are actually quite complex and beyond the scope of this column. We do actually conduct courses in feng shui and your questions are actually part of the course syllabus of our intermediate feng shui practitioner's course.

Yap Cheng Hai Academy Sdn Bhd
Tel: (03) 2070 8009; Fax: (03) 2072 8009; E-mail: info@ychacademy.com

Disclaimer: Yap Cheng Hai Academy Sdn Bhd does not, and cannot, in any way whatsoever or howsoever represent, warrant or guarantee that the recommendations given in this column mean that the happiness and good fortune of the person(s) who put these recommendations into practice will naturally or necessarily follow

If you have any questions regarding feng shui practices, please send your queries by e-mail to propertyplus@thesundaily.com or fax Propertyplus at 03 7660 8568. *theSun* reserves the right to publish answers as it deems fit.